



# **Huon Yacht Club Inc**

*Shipwrights Point, Port Huon*  
[www.huonyachtclub.org](http://www.huonyachtclub.org)

**2019-2020**



## **Club Officials**

<b>Commodore</b>	<b>Ray Scott-Hyland</b>	<b>0411 036 166</b>
<b>Vice Commodore</b>	<b>Mick Bartlett</b>	<b>0429 612 067</b>
<b>Slip Master</b>	<b>John Mann</b>	<b>0497 050 137</b>

## **Liability**

All those taking part in HYC races conducted by the club, or on behalf of another body, do so at their own risk and responsibility. The HYC is not responsible for the seaworthiness of a yacht whose entry is accepted, or the sufficiency or adequacy of its equipment. The HYC reserves the right to refuse an entry. Attention is drawn to RRS Fundamental Rule 4 which states "The responsibility for a boat's decision to participate in a race or to continue racing is hers alone".

## **Pennant/ Race Fees**

Harbour Pennant Races	(2 races)	\$ 5.00
Long Distance Pennant Races	(5 races)	\$10.00
Autumn Harbour Series	(2 races)	\$ 5.00
Twilight Pennants	(15 races)	\$15.00
Single Race Entry		\$ 4.00

All race fees are due prior to the first race of the season

## **Membership Fees**

Adult Member	\$ 95.00
Family Membership	\$ 145.00
Junior Member	\$ 45.00
Social Member	\$ 60.00
Social Family Membership	\$ 120.00

Australian Sailing Number (YA Number) is included in the non-social Membership Fee

## **Club Meetings**

All meetings will be held in the Clubhouse on the first Tuesday of each month starting at 7.30pm

## **Time Limits**

Unless stated differently on the programme finishing times are as follows:

- **Harbour Races**

The leading yacht must finish by 5.30pm. Any entrants not finished by 7.00pm will be deemed retired.

- **Long Distance Races**

The leading yacht must finish by 7.00pm. Any entrant not finished by 9.00pm will be deemed retired.

- **Twilight Races**

The Starter will try to set a course for the fastest boat to finish close to 60 minutes. Any entrant not finished within 60 minutes after this will be deemed retired.

### **Protests**

1. All protests accompanied by a protest fee of \$10.00 must be lodged at the HYC on the appropriate form within 24 hours of the completion of the race.
2. A red flag must be displayed by a yacht that is considering protesting another yacht, or yachts. This is to be seen by the Starter upon completion of that yacht's race.

### **Radio**

The radio frequency used for all HYC events is VHF Channel 77 except for the McLaren Series races which is VHF Channel 73. All entrants are to have their radios turned on during a race in case contact needs to be made between the Starter and entrants.

All entrants are to give a radio check with number of crew on board before all races for the safety of all participants. Failing to do so will not give any grounds for protest.



## **Pennants**

### **Harbour Pennant**

The Harbour Pennant will be a 2 race series with both races to count.

The Autumn Harbour Series will be a 2 race series with both races to count.

### **Long Distance Pennant**

The Long Distance Pennant will be a 5 race series with 4 races to count.

### **Twilight Pennant**

The Twilight Pennant will be one race drop from the total of Series 1 & 2.

**Series 1** will consist of five Twilight races with no drop allowed.

**Series 2** will consist of five Twilight races with no drop allowed.

**Series 3** will consist of five Twilight races with one drop allowed.

### **Fred McLaren Series**

The Fred McLaren Series will be a 4 race series with one drop allowed as outlined in the Fred McLaren Series section in this program

### **Pennant Points**

The overall pennant winners will be calculated using the low point scoring system where 1<sup>st</sup> Place = 1 Point, 2<sup>nd</sup> place = 2 Points, 3<sup>rd</sup> place = 3 Points, etc.

**The Overall Winner of a Pennant is the Yacht with the least amount of points after their worst score (if applicable) is dropped.**

### **Line Honours Trophy**

Not all races on the HYC programme will count for the Overall Line Honours Trophy. Races to be included are all Pennant Races, both Harbour and Long Distance, plus Fred McLaren Races (excludes all pursuit races).

Noakes<sup>+</sup>  
GROUP

HARDSTAND  
SHIPWRIGHTS  
ENGINEERING



PORT HUON  
MARINA

0439 164 320



---

HUON

---

AQUACULTURE

## Fred McLaren Series

Frederick James McLaren (Fred) was born on 8 November 1905 and passed away on 7 October 1985 aged 79.

During his lifetime Fred was an active sailor who built his own boat and served as a race official in the starters box at the Huon Yacht Club.

He organised many regattas on the Huon River and, following his death in 1986, the Huon Yacht Club decided to name a race series in honour of Fred and invited the Port Cygnet Sailing Club to join with them and race for the Fred McLaren Memorial Trophy.

The first Fred McLaren race series was run in the 1986-1987 season and was won by *Rahra* which was skippered by John Harvey from the Port Cygnet Sailing Club.

The following year the series was won by Sam Walter who, at the time, was a member of the Huon Yacht Club on his yacht *Ragtime*

The race series has been run each year since its inception with this upcoming series being the 36<sup>th</sup> year the Huon and Cygnet club boats compete for this coveted trophy.

To date yachts from the Huon Yacht Club have won the trophy 19 times with the yachts from the Port Cygnet Club close behind with 15 series wins, so the racing has always been closely contested.

Multiple winners of the series have been Jeff Sharp with five series wins, closely followed by Dave O'Neil with four series wins.

Quite a few sailors have won the series twice, including the winner of the first series John Harvey, Gary Burdon, Bob Cleary, Bob Direen, Dave "Skins" O'Neil, David Sharp, Stan Kay and Mick Bartlett.

The remainder of the series wins were taken by Sam Walter, Peter Pepper, Andrew Scott, Adam Goode, Scott Sharp, Phill Jeffs, Peter Gautschi, Rod Coombe and Rod Cooper.

Last season the series was deemed null and void when discrepancies between the Huon and Cygnet race programs caused confusion amongst the competing yachts. This prompted the club officials to meet and set some ground rules to ensure that the series would continue in the future as a hard fought but fair contest between the yachts and crew from both clubs in memory of Fred's contribution to sailing on the Huon River.

## **Important information for the McLaren Series this year**

VHF Channel 73 will be used for all races.

Yachts intending to compete in the series need to be registered 14 days prior to the first race and will be allocated a starting handicap by the handicappers from both clubs. If the owners have any concerns with the allocated handicap they may speak to their club handicapper.

Any yachts not registered for the series may start in a race but will not be included in the race or series results.

Cruising yachts that would like to compete but do not want to join the mass start may nominate when registering for the series that they would like to start 15 minutes prior to the mass start and this will be considered by the handicappers from both clubs.

All boats competing in races must radio the starters with their intention to race and number of persons on board. This radio call must be completed no later than 20 minutes before the official mass start time.

One race in the series can be dropped as long as the boat has started in that race.

If a boat does not start in a race it will be awarded the amount of boats registered for the series plus one.

If a boat starts a race but does not finish it and does not want to drop that race it will be awarded the amount of boats starting that race plus one.



# Sailing Instructions

All races conducted by the HYC will be governed by the 2017-2021 Racing Rules of Sailing (RRS) of the International Sailing Federation and these sailing instructions.

## Handicaps

Handicaps will be at the Sailing Committee's discretion.

**Note:** In lieu of Code Flag S the Club will display an orange board with a black letter S on it.

## Starting

**Note:** In lieu of Prep Flag "P" lights will be illuminated at the top of the HYC Clubhouse in the following sequence.

5 Minute Warning Signal	3 lights illuminated
4 Minute Prep Signal	2 lights illuminated
1 Minute Prep Removal Signal	1 light illuminated
Start Signal	<b>ALL</b> lights extinguished

## Recalls

- If a yacht/s crosses the line prematurely one sound signal will be made. It is the responsibility of a premature starter to return and start correctly otherwise a 20% scoring penalty will apply. (RRS Rule, Scoring Penalty 44.3(c)).
- If the Starter is unable to identify any yacht/s that were on course side (OCS), the starter may order a general recall by making two sound signals. The race will then be started again ten minutes later than the advertised time.
- **Note:** The starter will acknowledge any yacht/s that have made contact to them by radio regarding whether they were over the line or not.

## Engine use at start of race

The engine must be disengaged from the drive shaft at the 4 minute preparatory signal.



## Shortened Course

1. If the **S** board is displayed in the southern window of the Clubhouse the Race will finish on the completion of the current lap.
2. Two sound signals will be given to the leading yacht/s as they approach the start/finish line.  
**Note:** All competitors must then pass through the finish line disregarding the rounding of Mark S if that was a mark in the existing course.

## Change of Course

1. If for any reason the Starter wishes to change the Course for the next lap two sound signals will be given to the leading yacht/s as they approach the start/finish line. Pennant Flag C will also be displayed on the Flag Pole of the Clubhouse.
2. The two ensigns will be removed to allow better visibility.
3. The new course letter will be displayed and the original removed.
4. All yachts are then to complete one lap of the new course.

## Finishing

1. All races will finish upriver through the starting line.
2. After finishing a race a yacht must not sail back through the finishing line otherwise it may be disqualified.

## Retirement

In the event of retirement the starter is to be notified as soon as possible, either on VHF 77 or VHF 73 in McLaren Series races or in person.

## Ties

Any race ties will be shared points.



- General Electrical
- Industrial Electrical
- Solar Installation
- Heating and Cooling Installation
- Security Installation
- Phone Installation



**GSD Wobough Electrical Contractors**

Lic: 129466



**for friendly, professional service**

**0439 433 915**

**call our local electricians ...**

**0418 512 973**

# Jen<sup>24</sup> Z



Jen Z is an exciting initiative to encourage teenage sailing in the Huon Valley.

The Club has purchased a J24 sailing boat for the purpose of teaching teenagers to sail with the aim to have them crew the boat in both our Thursday Twilight and weekend races.

We will teach the teenagers practical boat handling and sailing skills and help them to work together as a cohesive crew and be responsible for decision making on the boat.

The teenagers will be responsible for maintaining the boat, encouraging other young people to join the program and fund raise to contribute towards maintenance costs.

The J24 requires four crew and the additional teenagers will rotate between the J24 and other yachts in the fleet so that they can learn valuable skills from experienced sailors on various types of boats.

The Huon Yacht Club would like to thank the following businesses and organisations that have pledged support for this program:

**The Port Huon Marina**

**The Geeveston Pharmacy Health Bug**

**The Derwent Sailing Squadron**

**Quantum Sails**

**Franklin Marine**

**The Geeveston Community Op Shop**

**L & S Doyle Geeveston**

**The Stihl Sop Huonville**

**DeNeefe Signs**

**Dean Marks Boat Building**

- General Engineering
- Diesel Fitting
- Marine Engine Service and Repair
- Engine Installations
- Stainless Steel and Aluminium Fabrication
- 12 volt Wiring



**Call Adam Mullard**  
**for your engineering requirements.**

177 Palmers Road,  
Port Huon  
[fluxengineering@outlook.com](mailto:fluxengineering@outlook.com)







## Geeveston Pharmacy - Your local pharmacy

"Better health, better value, better life"



Free medication packs

Free delivery to your door in the Huon Valley

Great, friendly service and advice

Phone: (03) 6297 1256 A/Hours: 0467 194 716

Open: Monday to Friday 9am to 5:30pm & Saturday 9am to 1pm

# PORT HUON – TASMANIA

LAT 43° 10' S LONG 146° 59' E

Times and Heights of High and Low Waters

# 2019

Local Time

SEPTEMBER				OCTOBER				NOVEMBER				DECEMBER			
Time	m	Time	m	Time	m	Time	m	Time	m	Time	m	Time	m	Time	m
<b>1</b> 0335 0.34 1010 0.95 SU 1522 0.68 2142 1.11	<b>16</b> 0230 0.63 1014 0.84 MO 1439 0.70 2156 0.87	<b>1</b> 0420 0.61 1006 1.02 TU 1701 0.32 2339 1.00	<b>16</b> 0200 0.79 0904 0.96 WE 1744 0.48	<b>1</b> 0237 1.04 0707 0.92 FR 1157 1.10 1943 0.15	<b>16</b> 0433 1.00 0555 1.00 SA 1013 1.11 1855 0.26	<b>1</b> 0359 1.07 0803 0.99 SU 1200 1.08 2016 0.23	<b>16</b> 0419 1.03 0618 1.02 MO 1114 1.18 1936 0.18								
<b>2</b> 0438 0.42 1101 1.01 MO 1709 0.58 2315 1.05	<b>17</b> 0306 0.69 1049 0.88 TU 1720 0.65 2319 0.87	<b>2</b> 0521 0.70 1059 1.07 WE 1805 0.24	<b>17</b> 0949 0.99 1829 0.42 TH	<b>2</b> 0334 1.07 0813 0.92 SA 1246 1.08 2033 0.19	<b>17</b> 0416 1.02 0652 0.98 SU 1128 1.11 1938 0.23	<b>2</b> 0420 1.07 0902 0.96 MO 1252 1.03 2057 0.28	<b>17</b> 0410 1.04 0728 0.97 TU 1227 1.14 2025 0.20								
<b>3</b> 0535 0.52 1150 1.08 TU 1821 0.46	<b>18</b> 0442 0.74 1118 0.93 WE 1804 0.58	<b>3</b> 0054 1.01 0617 0.78 TH 1148 1.11 1903 0.20	<b>18</b> 0426 0.91 0625 0.89 FR 1049 1.01 1910 0.37	<b>3</b> 0414 1.06 0912 0.90 SU 1334 1.05 2118 0.25	<b>18</b> 0422 1.04 0741 0.96 MO 1238 1.11 2023 0.22	<b>3</b> 0443 1.05 0946 0.91 TU 1342 0.98 2132 0.34	<b>18</b> 0424 1.05 0841 0.91 WE 1332 1.07 2113 0.25								
<b>4</b> 0036 1.02 0627 0.63 WE 1236 1.14 1929 0.38	<b>19</b> 0015 0.89 0543 0.78 TH 1141 0.98 1843 0.52	<b>4</b> 0205 1.02 0713 0.83 FR 1233 1.12 1959 0.21	<b>19</b> 0211 0.96 0713 0.90 SA 1205 1.04 1950 0.32	<b>4</b> 0448 1.04 0957 0.87 MO 1421 1.00 2157 0.32	<b>19</b> 0431 1.04 0829 0.91 TU 1335 1.09 2108 0.23	<b>4</b> 0505 1.03 1026 0.86 WE 1433 0.93 2203 0.41	<b>19</b> 0439 1.06 1019 0.82 TH 1442 1.00 2158 0.33								
<b>5</b> 0151 0.99 0717 0.72 TH 1318 1.18 2032 0.33	<b>20</b> 0104 0.92 0625 0.81 FR 1208 1.03 1920 0.47	<b>5</b> 0310 1.02 0808 0.85 SA 1317 1.11 2047 0.24	<b>20</b> 0253 0.99 0756 0.90 SU 1303 1.06 2031 0.29	<b>5</b> 0518 1.01 1035 0.83 TU 1508 0.96 2231 0.38	<b>20</b> 0429 1.04 0920 0.85 WE 1431 1.06 2151 0.26	<b>5</b> 0525 1.02 1105 0.81 TH 1525 0.88 2227 0.47	<b>20</b> 0458 1.09 1124 0.71 FR 1608 0.92 2235 0.43								
<b>6</b> 0306 0.97 0803 0.80 FR 1358 1.20 2124 0.31	<b>21</b> 0150 0.94 0705 0.84 SA 1243 1.07 1957 0.41	<b>6</b> 0459 1.01 0956 0.84 SU 1459 1.08 2229 0.30	<b>21</b> 0332 1.01 0836 0.88 MO 1353 1.08 2114 0.26	<b>6</b> 0545 0.98 1108 0.79 WE 1554 0.92 2258 0.44	<b>21</b> 0456 1.04 1021 0.78 TH 1534 1.02 2233 0.32	<b>6</b> 0540 1.01 1144 0.75 FR 1619 0.84 2237 0.53	<b>21</b> 0523 1.12 1223 0.58 SA 1738 0.87 2304 0.55								
<b>7</b> 0414 0.96 0844 0.84 SA 1435 1.20 2210 0.32	<b>22</b> 0235 0.96 0744 0.85 SU 1320 1.11 2038 0.35	<b>7</b> 0538 0.98 1034 0.82 MO 1542 1.05 2307 0.36	<b>22</b> 0412 1.00 0915 0.84 TU 1440 1.10 2157 0.25	<b>7</b> 0607 0.96 1138 0.74 TH 1640 0.89 2314 0.49	<b>22</b> 0528 1.05 1135 0.68 FR 1655 0.96 2311 0.41	<b>7</b> 0544 1.03 1222 0.69 SA 1715 0.81 2246 0.58	<b>22</b> 0553 1.16 1319 0.46 SU 1903 0.84 2324 0.66								
<b>8</b> 0506 0.95 0919 0.85 SU 1513 1.18 2250 0.35	<b>23</b> 0322 0.96 0821 0.84 MO 1400 1.16 2121 0.30	<b>8</b> 0613 0.95 1106 0.79 TU 1624 1.01 2340 0.41	<b>23</b> 0453 1.00 0955 0.78 WE 1533 1.10 2243 0.26	<b>8</b> 0617 0.94 1204 0.69 FR 1727 0.86 2322 0.54	<b>23</b> 0603 1.07 1240 0.57 SA 1819 0.91 2346 0.52	<b>8</b> 0555 1.06 1301 0.62 SU 1818 0.79 2305 0.64	<b>23</b> 0625 1.20 1411 0.36 MO 2015 0.84 2333 0.75								
<b>9</b> 0549 0.93 0944 0.85 MO 1550 1.15 2328 0.39	<b>24</b> 0411 0.96 0856 0.81 TU 1444 1.19 2208 0.26	<b>9</b> 0644 0.92 1126 0.75 WE 1705 0.98	<b>24</b> 0535 0.99 1041 0.70 TH 1635 1.08 2329 0.29	<b>9</b> 0620 0.95 1237 0.64 SA 1817 0.83 2340 0.59	<b>24</b> 0639 1.10 1345 0.45 SU 1950 0.88	<b>9</b> 0617 1.10 1348 0.55 MO 1952 0.78 2321 0.70	<b>24</b> 0658 1.23 1502 0.27 TU 2140 0.84 2318 0.83								
<b>10</b> 0629 0.91 0956 0.82 TU 1627 1.12	<b>25</b> 0500 0.94 0934 0.75 WE 1535 1.21 2259 0.24	<b>10</b> 0007 0.46 0712 0.88 TH 1137 0.71 1744 0.95	<b>25</b> 0617 0.98 1136 0.61 FR 1749 1.05	<b>10</b> 0638 0.97 1322 0.58 SU 1914 0.80	<b>25</b> 0016 0.64 0715 1.14 MO 1452 0.34 2113 0.87	<b>10</b> 0644 1.13 1444 0.48 TU 2119 0.79 2317 0.77	<b>25</b> 0732 1.25 1552 0.22 WE								
<b>11</b> 0004 0.42 0707 0.88 WE 1019 0.79 1703 1.09	<b>26</b> 0548 0.93 1017 0.69 TH 1638 1.20 2355 0.26	<b>11</b> 0026 0.51 0728 0.86 FR 1205 0.67 1826 0.91	<b>26</b> 0017 0.37 0659 0.99 SA 1248 0.53 1907 0.99	<b>11</b> 0000 0.65 0702 1.00 MO 1419 0.53 2108 0.79	<b>26</b> 0034 0.76 0751 1.17 TU 1554 0.25	<b>11</b> 0712 1.16 1540 0.40 WE	<b>26</b> 0806 1.24 1643 0.19 TH								
<b>12</b> 0036 0.46 0745 0.85 TH 1054 0.76 1740 1.05	<b>27</b> 0636 0.92 1110 0.63 FR 1748 1.16	<b>12</b> 0042 0.55 0725 0.85 SA 1248 0.63 1911 0.88	<b>27</b> 0107 0.47 0741 1.01 SU 1409 0.44 2042 0.94	<b>12</b> 0012 0.72 0728 1.03 TU 1529 0.48 2234 0.80	<b>27</b> 0831 1.18 1650 0.18 WE	<b>12</b> 0741 1.19 1630 0.34 TH	<b>27</b> 0844 1.22 1735 0.19 FR								
<b>13</b> 0102 0.50 0823 0.82 FR 1134 0.74 1820 1.01	<b>28</b> 0051 0.32 0726 0.92 SA 1220 0.57 1901 1.10	<b>13</b> 0103 0.60 0741 0.86 SU 1343 0.60 2002 0.84	<b>28</b> 0203 0.60 0825 1.04 MO 1537 0.34 2215 0.93	<b>13</b> 0018 0.79 0754 1.06 WE 1637 0.42	<b>28</b> 0916 1.18 1745 0.15 TH	<b>13</b> 0816 1.21 1716 0.28 FR	<b>28</b> 0925 1.18 1826 0.21 SA								
<b>14</b> 0127 0.54 0900 0.81 SA 1219 0.73 1901 0.96	<b>29</b> 0152 0.41 0817 0.94 SU 1355 0.51 2040 1.03	<b>14</b> 0123 0.66 0804 0.88 MO 1451 0.57 2216 0.81	<b>29</b> 0328 0.73 0914 1.07 TU 1652 0.25 2343 0.95	<b>14</b> 0828 1.09 1727 0.36 TH	<b>29</b> 0350 1.04 0541 1.02 FR 1009 1.16 1838 0.15	<b>14</b> 0904 1.22 1802 0.23 SA	<b>29</b> 0459 1.05 0610 1.04 SU 1010 1.12 1914 0.23								
<b>15</b> 0157 0.58 0937 0.81 SU 1314 0.72 1946 0.91	<b>30</b> 0307 0.51 0912 0.97 MO 1546 0.42 2216 0.99	<b>15</b> 0138 0.72 0830 0.92 TU 1632 0.54 2333 0.83	<b>30</b> 0502 0.82 1009 1.09 WE 1753 0.17	<b>15</b> 0915 1.11 1812 0.31 FR	<b>30</b> 0354 1.07 0648 1.02 SA 1106 1.13 1930 0.18	<b>15</b> 1001 1.21 1848 0.19 SU	<b>30</b> 0515 1.04 0727 1.01 MO 1105 1.06 1957 0.28								
		<b>31</b> 0107 0.99 0606 0.89 TH 1105 1.11 1849 0.14				<b>31</b> 0516 1.02 0831 0.96 TU 1211 1.00 2033 0.33									

© Copyright Commonwealth of Australia 2018, Bureau of Meteorology

Datum of Predictions is Lowest Astronomical Tide

Times are in local standard time (UTC +10:00) or daylight savings time (UTC +11:00) when in effect

Moon Phase Symbols

● New Moon

◐ First Quarter

○ Full Moon

◑ Last Quarter

Caution: Predictions are of secondary quality

# PORT HUON – TASMANIA

LAT 43° 10' S LONG 146° 59' E

Times and Heights of High and Low Waters

# 2020

Local Time

JANUARY				FEBRUARY				MARCH				APRIL														
Time		m		Time		m		Time		m		Time		m												
<b>1</b>	0438	1.02	<b>16</b>	0338	1.02	<b>1</b>	0349	0.99	<b>16</b>	0336	1.11	<b>1</b>	0231	0.94	<b>16</b>	0242	1.11									
	0920	0.91		0904	0.78		1025	0.66		1059	0.31		0937	0.51		1016	0.16									
WE	1313	0.94	TH	1354	0.99	SA	1518	0.80	SU	1721	0.87	SU	1525	0.81	MO	1725	0.93	WE	1821	0.92	TH	1708	0.96			
	2107	0.38		2110	0.33		2132	0.59	☉	2223	0.69		2053	0.72	☉	2202	0.79	☉	2121	0.86		2205	0.80			
<b>2</b>	0444	1.02	<b>17</b>	0359	1.06	<b>2</b>	0404	1.02	<b>17</b>	0414	1.15	<b>2</b>	0254	0.98	<b>17</b>	0325	1.12	<b>2</b>	0247	1.05	<b>17</b>	0310	1.01			
	1007	0.84		1025	0.65		1112	0.59		1150	0.25		1017	0.45		1103	0.16		1022	0.26		1032	0.32			
TH	1413	0.89	FR	1521	0.91	SU	1620	0.79	MO	1828	0.87	MO	1755	0.83	TU	1812	0.92	TH	1825	0.91	FR	1740	0.94		2239	0.76
	2138	0.44	☉	2157	0.44	☉	2147	0.66		2256	0.75		2118	0.76		2244	0.80		2154	0.83						
<b>3</b>	0455	1.03	<b>18</b>	0426	1.11	<b>3</b>	0421	1.06	<b>18</b>	0452	1.17	<b>3</b>	0318	1.02	<b>18</b>	0408	1.11	<b>3</b>	0326	1.08	<b>18</b>	0354	0.97			
	1055	0.78		1128	0.53		1152	0.52		1236	0.23		1052	0.40		1145	0.19		1102	0.22		1101	0.38			
FR	1514	0.84	SA	1652	0.86	MO	1803	0.79	TU	1923	0.86	TU	1846	0.85	WE	1849	0.90	FR	1813	0.90	SA	1810	0.91		2308	0.72
☉	2201	0.51		2236	0.56		2208	0.71		2321	0.78	☉	2148	0.79		2318	0.79		2227	0.78		2308	0.72			
<b>4</b>	0504	1.05	<b>19</b>	0457	1.16	<b>4</b>	0444	1.10	<b>19</b>	0530	1.17	<b>4</b>	0346	1.06	<b>19</b>	0451	1.08	<b>4</b>	0411	1.11	<b>19</b>	0434	0.92			
	1143	0.71		1224	0.41		1227	0.45		1318	0.22		1125	0.34		1223	0.24		1145	0.20		1123	0.44			
SA	1614	0.81	SU	1815	0.84	TU	1919	0.81	WE	2008	0.84	WE	1914	0.86	TH	1924	0.88	SA	1846	0.88	SU	1837	0.89		2335	0.68
	2211	0.58		2302	0.67		2234	0.75		2338	0.79		2218	0.80		2347	0.76		2304	0.72						

© Copyright Commonwealth of Australia 2019, Bureau of Meteorology

Datum of Predictions is Lowest Astronomical Tide

Times are in local standard time (UTC +10:00) or daylight savings time (UTC +11:00) when in effect

Moon Phase Symbols    ● New Moon                  ☉ First Quarter

Caution: Predictions are of secondary quality

○ Full Moon                                  ☾ Last Quarter



# PORT HUON – TASMANIA

LAT 43° 10' S LONG 146° 59' E

Times and Heights of High and Low Waters

# 2020

Local Time

MAY				JUNE				JULY				AUGUST			
Time	m	Time	m	Time	m	Time	m	Time	m	Time	m	Time	m	Time	m
<b>1</b> 0107 1.10 0841 0.26 FR 1545 0.99 ☉ 2030 0.86		<b>16</b> 0232 0.99 0945 0.44 SA 1651 1.02 ☾ 2227 0.79		<b>1</b> 0246 1.05 0922 0.46 MO 1614 1.15 ☾ 2231 0.68		<b>16</b> 0400 0.89 0910 0.69 TU 1616 1.17 ☾ 2335 0.68		<b>1</b> 0503 0.94 0919 0.76 WE 1608 1.34		<b>16</b> 0520 0.88 0857 0.84 TH 1551 1.29 ☾ 2350 0.55		<b>1</b> 0039 0.31 0738 0.95 SA 0941 0.93 ☾ 1704 1.38		<b>16</b> 0708 0.91 0942 0.88 SU 1612 1.32	
<b>2</b> 0155 1.10 0920 0.26 SA 1618 0.99 2112 0.79		<b>17</b> 0321 0.94 1004 0.51 SU 1708 1.02 2304 0.74		<b>2</b> 0416 0.99 0955 0.56 TU 1645 1.20 2350 0.56		<b>17</b> 0503 0.87 0930 0.75 WE 1636 1.21		<b>2</b> 0007 0.46 0629 0.94 TH 0942 0.84 1642 1.38		<b>17</b> 0648 0.90 0914 0.88 FR 1615 1.33		<b>2</b> 0127 0.30 0840 0.95 SU 1006 0.94 1749 1.34		<b>17</b> 0027 0.36 0749 0.89 MO 1004 0.87 1655 1.33	
<b>3</b> 0248 1.09 0958 0.29 SU 1654 1.00 2202 0.70		<b>18</b> 0409 0.90 1006 0.57 MO 1712 1.03 2339 0.69		<b>3</b> 0550 0.95 1023 0.68 WE 1718 1.25		<b>18</b> 0016 0.61 0633 0.87 TH 0949 0.81 1701 1.25		<b>3</b> 0101 0.36 0744 0.95 FR 0958 0.92 1722 1.41		<b>18</b> 0031 0.49 1643 1.35 SA		<b>3</b> 0217 0.31 0953 0.94 MO 1037 0.94 1834 1.29		<b>18</b> 0114 0.32 0834 0.88 TU 1044 0.84 1749 1.32	
<b>4</b> 0355 1.06 1036 0.35 MO 1730 1.02 2307 0.60		<b>19</b> 0459 0.86 1018 0.63 TU 1724 1.05		<b>4</b> 0059 0.43 0725 0.93 TH 1048 0.79 1755 1.30		<b>19</b> 0102 0.55 1726 1.28 FR		<b>4</b> 0154 0.30 0910 0.97 SA 1004 0.97 1808 1.41		<b>19</b> 0116 0.44 1716 1.36 SU		<b>4</b> 0309 0.34 1918 1.22 TU ☉		<b>19</b> 0202 0.31 0918 0.87 WE 1138 0.83 ☾ 1850 1.28	
<b>5</b> 0517 1.00 1114 0.45 TU 1807 1.06		<b>20</b> 0020 0.64 0558 0.83 WE 1037 0.69 1746 1.09		<b>5</b> 0205 0.33 0851 0.94 FR 1107 0.90 1838 1.34		<b>20</b> 0154 0.49 1752 1.30 SA		<b>5</b> 0247 0.27 1856 1.38 SU ☉		<b>20</b> 0203 0.39 1802 1.37 MO		<b>5</b> 0401 0.38 1159 0.96 WE 1208 0.95 2001 1.14		<b>20</b> 0255 0.31 1003 0.89 TH 1250 0.82 1955 1.22	
<b>6</b> 0032 0.50 0645 0.94 WE 1150 0.58 1844 1.11		<b>21</b> 0111 0.58 0746 0.82 TH 1051 0.76 1812 1.12		<b>6</b> 0306 0.25 1926 1.35 SA ☉		<b>21</b> 0246 0.45 1828 1.32 SU ☾		<b>6</b> 0339 0.27 1945 1.33 MO		<b>21</b> 0251 0.35 1858 1.35 TU ☾		<b>6</b> 0449 0.43 1222 0.97 TH 1411 0.96 2046 1.06		<b>21</b> 0352 0.35 1047 0.93 FR 1452 0.80 2118 1.13	
<b>7</b> 0159 0.39 0831 0.91 TH 1223 0.72 ☉ 1925 1.16		<b>22</b> 0218 0.53 0917 0.83 FR 1040 0.83 1838 1.15		<b>7</b> 0402 0.20 2019 1.33 SU		<b>22</b> 0334 0.40 1917 1.32 MO		<b>7</b> 0430 0.29 2035 1.27 TU		<b>22</b> 0340 0.33 1957 1.32 WE		<b>7</b> 0532 0.48 1246 0.99 FR 1809 0.90 2153 0.99		<b>22</b> 0448 0.42 1129 1.00 SA 1716 0.70 2303 1.06	
<b>8</b> 0317 0.28 1003 0.92 FR 1253 0.85 2013 1.20		<b>23</b> 0323 0.48 1907 1.18 SA ☾		<b>8</b> 0455 0.20 1540 1.11 MO 1630 1.11 2119 1.29		<b>23</b> 0419 0.37 2012 1.31 TU		<b>8</b> 0519 0.33 1602 1.09 WE 1721 1.08 2130 1.19		<b>23</b> 0429 0.32 2101 1.26 TH		<b>8</b> 0611 0.55 1305 1.02 SA 1901 0.83 2351 0.94		<b>23</b> 0540 0.51 1210 1.08 SU 1828 0.58	
<b>9</b> 0421 0.19 2111 1.23 SA		<b>24</b> 0411 0.43 1946 1.20 SU		<b>9</b> 0548 0.22 1419 1.12 TU 1744 1.08 2221 1.24		<b>24</b> 0502 0.34 2111 1.28 WE		<b>9</b> 0605 0.39 1358 1.09 TH 1832 1.02 2238 1.11		<b>24</b> 0517 0.34 1235 1.04 FR 1714 0.95 2224 1.18		<b>9</b> 0644 0.62 1323 1.06 SU 1948 0.76		<b>24</b> 0031 1.01 0627 0.62 MO 1249 1.15 1937 0.47	
<b>10</b> 0519 0.14 1356 1.03 SU 1710 0.99 2212 1.23		<b>25</b> 0453 0.39 2035 1.20 MO		<b>10</b> 0638 0.28 1434 1.12 WE 1849 1.04 2320 1.17		<b>25</b> 0545 0.33 1438 1.08 TH 1717 1.06 2220 1.24		<b>10</b> 0645 0.45 1411 1.10 FR 1931 0.95 2347 1.03		<b>25</b> 0603 0.40 1305 1.09 SA 1834 0.85 2349 1.09		<b>10</b> 0055 0.91 0709 0.69 MO 1343 1.10 2032 0.69		<b>25</b> 0151 0.98 0710 0.72 TU 1326 1.22 2046 0.38	
<b>11</b> 0615 0.13 1427 1.07 MO 1810 1.00 2307 1.21		<b>26</b> 0533 0.35 2133 1.20 TU		<b>11</b> 0723 0.34 1457 1.12 TH 1953 0.98		<b>26</b> 0628 0.34 1358 1.10 FR 1833 1.00 2334 1.18		<b>11</b> 0721 0.52 1426 1.12 SA 2022 0.89		<b>26</b> 0646 0.49 1336 1.15 SU 1946 0.75		<b>11</b> 0153 0.89 0722 0.76 TU 1403 1.14 2113 0.63		<b>26</b> 0313 0.96 0750 0.81 WE 1403 1.26 ☾ 2145 0.32	
<b>12</b> 0709 0.16 1458 1.09 TU 1910 0.98		<b>27</b> 0613 0.33 1534 1.07 WE 1756 1.05 2241 1.19		<b>12</b> 0014 1.10 0801 0.42 FR 1519 1.11 2045 0.92		<b>27</b> 0709 0.39 1417 1.13 SA 1935 0.92		<b>12</b> 0052 0.97 0750 0.60 SU 1442 1.14 2109 0.82		<b>27</b> 0113 1.01 0724 0.60 MO 1407 1.22 ☾ 2107 0.63		<b>12</b> 0250 0.89 0741 0.81 WE 1421 1.18 ☾ 2151 0.58		<b>27</b> 0435 0.96 0826 0.86 TH 1441 1.29 2234 0.29	
<b>13</b> 0000 1.17 0758 0.22 WE 1529 1.08 2013 0.94		<b>28</b> 0653 0.31 1527 1.07 TH 1845 1.01 2347 1.17		<b>13</b> 0109 1.03 0833 0.49 SA 1538 1.11 ☾ 2132 0.87		<b>28</b> 0040 1.11 0746 0.46 SU 1443 1.17 ☾ 2043 0.82		<b>13</b> 0154 0.93 0808 0.67 MO 1457 1.17 ☾ 2153 0.75		<b>28</b> 0241 0.96 0758 0.70 TU 1436 1.28 2212 0.52		<b>13</b> 0350 0.89 0814 0.84 TH 1440 1.22 2225 0.52		<b>28</b> 0531 0.95 0902 0.88 FR 1523 1.29 2320 0.29	
<b>14</b> 0051 1.11 0840 0.29 TH 1559 1.06 2105 0.89		<b>29</b> 0733 0.31 1449 1.07 FR 1933 0.95		<b>14</b> 0203 0.97 0857 0.57 SU 1552 1.12 2215 0.81		<b>29</b> 0152 1.03 0821 0.56 MO 1511 1.22 2209 0.70		<b>14</b> 0256 0.90 0811 0.74 TU 1513 1.21 2234 0.69		<b>29</b> 0413 0.93 0829 0.80 WE 1506 1.33 2304 0.42		<b>14</b> 0532 0.90 0848 0.87 FR 1506 1.26 2302 0.47		<b>29</b> 0617 0.94 0935 0.87 SA 1608 1.27	
<b>15</b> 0142 1.05 0915 0.37 FR 1626 1.04 ☾ 2148 0.84		<b>30</b> 0044 1.14 0812 0.34 SA 1513 1.08 ☾ 2021 0.88		<b>15</b> 0301 0.92 0903 0.64 MO 1603 1.14 2256 0.75		<b>30</b> 0327 0.97 0851 0.66 TU 1538 1.28 2312 0.58		<b>15</b> 0359 0.88 0830 0.79 WE 1530 1.25 2312 0.62		<b>30</b> 0537 0.94 0857 0.87 TH 1540 1.37 2353 0.35		<b>15</b> 0627 0.91 0919 0.88 SA 1537 1.29 2343 0.41		<b>30</b> 0003 0.31 0659 0.92 SU 1006 0.85 1654 1.23	
		<b>31</b> 0141 1.10 0848 0.39 SU 1543 1.11 2118 0.79						<b>31</b> 0640 0.95 0922 0.91 FR 1620 1.39					<b>31</b> 0047 0.34 0743 0.89 MO 1036 0.83 1737 1.17		

© Copyright Commonwealth of Australia 2019, Bureau of Meteorology

Datum of Predictions is Lowest Astronomical Tide

Times are in local standard time (UTC +10:00) or daylight savings time (UTC +11:00) when in effect

Moon Phase Symbols ☉ New Moon

☾ First Quarter

☽ Full Moon

☿ Last Quarter

Caution: Predictions are of secondary quality





## Mooring & Marine Services

Look for the Green Boat 'Indian J'

- Moorings Serviced & Installed
- Work Boat Hire
- Derwent, Channel & Huon



**Ewen & Mary Mickan**

**Ph. 0418 197 003 or 0457 811 070**

[moorings345@outlook.com](mailto:moorings345@outlook.com)

PO Box 345, Rosny Park 7018





**The Old Bank of Geeveston is a small bistro/café specialising in rustic food, artisan pastries and great coffee**

**Licensed with Tasmanian wines and craft beer and cider**

**13 Church Street, Geeveston – 6297 9922**





(03) 6297 1052

[www.kermandie.com.au](http://www.kermandie.com.au)



4518 Huon Highway  
Port Huon, TAS

## THE KERMANDIE

HOTEL & MARINA

OPEN 7 DAYS



LIVE MUSIC



RESTAURANT



GREAT SEAFOOD



BEER GARDEN

The Wholesome  
**Health Bug**



## The Wholesome Health Bug - Health Food Store Huonville



"Healthy living .... naturally"

Located at the Entrance of Woolworths, Huonville (03) 6264 2428

Naturopathic advice, personalised herbal mixtures, vegan approved skincare,  
Geeveston Pharmacy prescription drop-off, giftware and so much more!

**Open: Monday to Friday 9am to 5:30pm & Saturday 9am to 3pm**



# Port Huon Trading Post

4478 Huon Highway, Port Huon Tasmania 7116

Phone 62971495

Award winning homemade pies

All Day Breakfast

Take Away Food

Post Office

Delicious meals

Bread, Milk, Papers

Open From 5 am - 7pm weekdays

Saturday 8am - 4pm Sunday 9am-4pm



Number 1 - lit port pile in position 43 degrees 05.927S, 147 00.493E. Light characteristic - FIR 5s

Number 2 - lit starboard pile in position 43 degrees 06.344S, 147 00.197E. Light Characteristic - FI G 5s

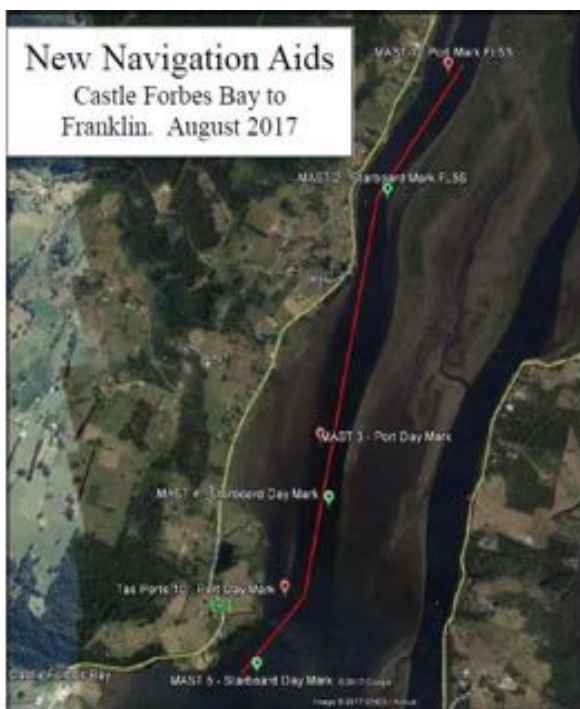
Number 3 - port pile in position 43 07.156S, 146 59.873E

Number 4 - starboard pile in position 43 07.366S, 146 59.912E

Number 5 - starboard pile in position 43 degrees 07.914S, 146 59.563E

## New Navigation Aids

Castle Forbes Bay to Franklin. August 2017









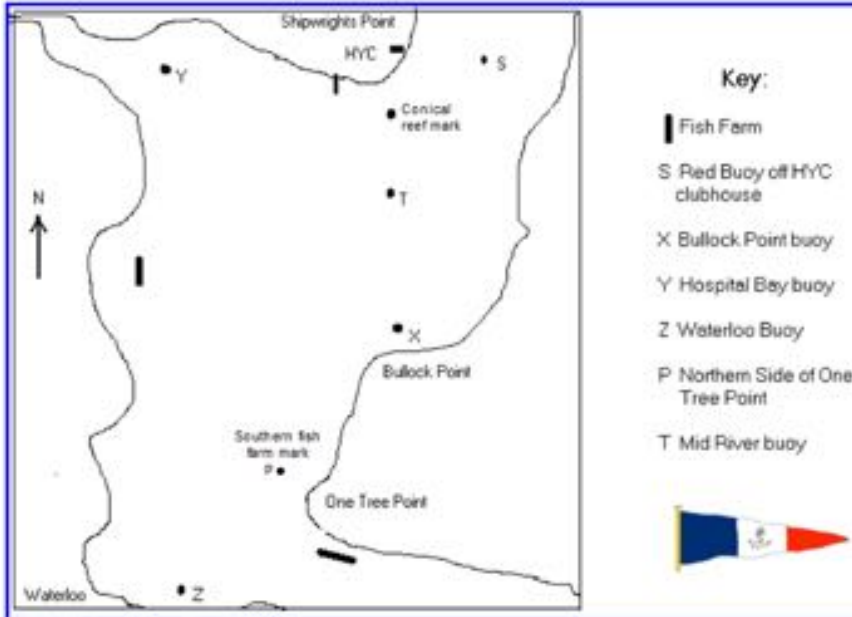
## **Huon Yacht Club**

**Athol Walter Memorial Slipway  
Shipwrights Point, Port Huon**

Available for use by all financial Huon Yacht Club members

Call our friendly Slip Master  
**John Mann on 0497 050 137**





### **Course A**

From the starting line to mark X to Y to S. All marks left to starboard.  
3 laps unless changed.

### **Course B**

From the starting line to mark P to Y to S. All marks left to starboard.  
3 laps unless changed.

### **Course C**

From the starting line to mark Z to Y to S. All marks left to starboard.  
2 laps unless changed.

### **Course D**

Reverse of course A.

### **Course E**

Reverse of course B.

### **Course F**

From the start to mark X to Y to S to T to S to X to Y to S to T to Finish.

### **Course K**

From the starting line to mark T to Y to S. All marks left to starboard.

### **Course L**

Reverse of course K.

**Course T** From S to T to S. Sausage Leg.

**Obstructions:** Please note that the conical buoy approx. 600 m S/W of the start/finish line is to be left inshore at all times.

# Huon Yacht Club Sailing Programme 2019-20



Date	Race		S L	Start
<b>Sept</b>				
20, 21, 22	<b>Pipe Opener Weekend</b>			
Fri 20	<b>Race 1:</b> Pipe Opener Hobart to Gordon		<b>DSS</b>	7.00pm
Sat 21	<b>Race 2:</b> Cock of the Huon		HYC	1.30pm
Sun 22	<b>Race 3:</b> Port Huon to Gordon		HYC	9.30am
<b>Oct</b>				
Sat 5	<b>HYC Opening Day</b> , Sail past and festivities at Clubhouse		HYC	1.00pm
Sat 12	<b>Harbour 1:</b> Mass Start		HYC	2.00pm
Sat 19				
Sat 26	<b>LDP 1</b> Course to be advised on Thursday before		HYC	10.00am
<b>Nov</b>				
Sat 2	<b>Overnight Cruise:</b> Cygnet Area			
<b>Sun 3</b>	<b>McLaren 1:</b> PCSC Brooks Bay, Waterloo to finish at HYC. All roundings to Starboard		<b>PCSC</b>	12 noon
Sat 9	<b>Harbour 2 Surges Bay Race.</b> Surges Bay, Hospital Bay, Brabazon Point to finish. All to Starboard except Brabazon which is kept to Port		HYC	2.00pm
Sat 16				
Sat 23	<b>LDP 2</b> Course to be advised on Thursday before		HYC	10.00am
Sat 30				
<b>Dec</b>				
Sat 7	<b>McLaren 2:</b> HYC Harbour Course Kermandie Challenge Trophy		HYC	12 noon
Sat 14				
Thurs 26	<b>Boxing Day:</b> Festivities at Clubhouse		HYC	11.00am
<b>Twilight</b>	First Boat starts at 5.45pm (approx.)			
<b>Series 1</b>	Thurs Oct 31 to Thurs Nov 28 (5 races)	<b>BBQ</b>	HYC	5.45pm
<b>Series 2</b>	Thurs 5 Dec to Thurs Dec 12 ( 2 races)			

# Huon Yacht Club Sailing Programme 2019-20



Date	Race		S L	Start
<b>Jan</b>				
Sat 4	LDP 3 Course to be advised on Thursday before		HYC	10.00am
Sat 11	Overnight Cruise: Sand Rock, Drip Beach			
Sun 12	McLaren 3: Huon Island Race.(Cygnet, Huon Island and return) LDP 4		PCSC	11.00am
Sat 18	Autumn Harbour 1: Mass Start		HYC	2.00pm
Sat 25				
<b>Feb</b>				
Sat 1	LDP 5 Course to be advised on Thursday before		HYC	10.00am
Sat 8				
Sat 15	McLaren 4 HYC to Cygnet via Waterloo, Brooks Bay. All roundings to Port		HYC	12 noon
Sat 22	Autumn Harbour 2 Mass Start Killala Bay Race, 2 laps		HYC	1.00pm
Sat 29				
<b>March</b>				
6, 7, 8	Port Cygnet Sailing Club Regatta			
Sat 14	Novice Skipper/Lady Skippers/Forward Hands Race End of season celebration	Bring Plate	HYC	1.30pm
<b>April</b>				
10, 11, 12, 13	Port Esperance Regatta Easter Weekend			
<b>Twilight</b>	First Boat Starts at 5.45pm (approx.)			
Series 2	Thurs Jan 9 to Thurs Jan 23 (3 races)	BBQ	HYC	5.45pm
Series 3	Thurs Jan 30 to Thurs Feb 27 (5 races)	BBQ	HYC	5.45pm



**MARINA | CHANDLERY | FISHING**

**Come visit Ian and Neil for your chandlery supplies**

**FRANKLIN RIVER PORT**



Raymarine Electronics  
Beta Marine Diesel Engines  
Outboard Motors  
Marine Paint & Antifoul  
Stainless & Brass Fittings

Rope & Chain  
Full Chandlery Range  
Safety Gear  
Wide Range of Knives  
Balustrading Parts

**3349 HUON HIGHWAY, FRANKLIN  
6266 3768**

[info@franklinmarine.com.au](mailto:info@franklinmarine.com.au)

[franklinmarine.com.au](http://franklinmarine.com.au)

